

48V Phantom Power Supply for Millenium Digital Consoles

Field Installation Instructions

This optional circuit board provides 48V DC phantom power to condenser microphones wired to the console which requires this voltage to operate.

This option is only available for, and may only be utilized with, Millenium Digital Consoles.

Installation

Install the circuit card in a open section of the console rear wall with the plastic mounting standoffs provided.

Connect J-1 with the jumper cable (provided) to the phantom power connector J-7 on the digital output board.

Note that connector JU-12 on the analog input plug-in card must also be inserted for all console channels where phantom power is required.



J-1 PINOUT

- | | |
|---|------------------------|
| 1 | +15VDC (in) (Brown) |
| 2 | Ground (Red) |
| 3 | Ground (Orange) |
| 4 | +48V DC (out) (Yellow) |
| 5 | N/C |

FIELD INSTALLATION NOTE:

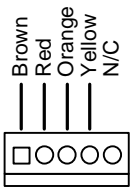
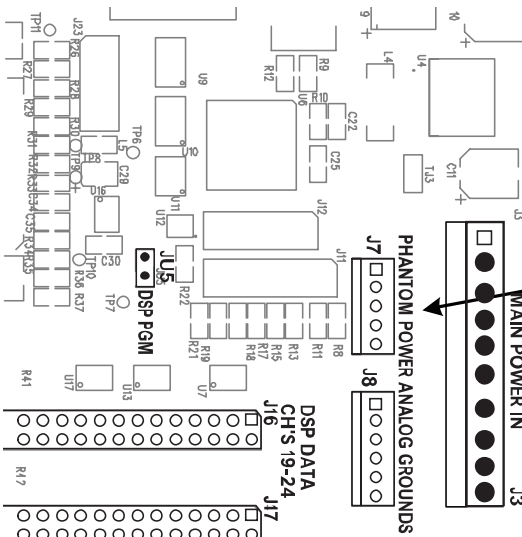
On consoles shipped prior to October 2008, capacitor C16 (100µf at 25 vDC) on each input mother board(s) must be replaced. With a 100µf capacitor at **50 vDC** (RS Part #8866), which is included with the phantom power supply board when shipped for field installation.

Note that C16 is located at the bottom center of the input mother board. Alternately, C16 may be removed (clipped out) if soldering in the new capacitor is not practical, as C16 is a non-essential filter capacitor.

C16



Digital Output Board (Lower Right Hand Section)



Connect the cable provided between J-7 on the digital output board and J-1 on the phantom power option board. Observe proper polarity on the cable as shown.

(Note: JU-12 must also be inserted on the analog input cards to activate phantom power on the card)

